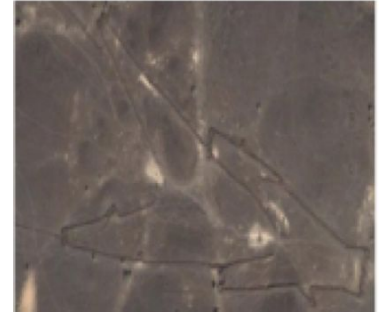


Khaybar Desert Kites Activity

By Nouf Aldossary
Riyadh, Saudi Arabia

Archaeologists and geologists have discovered giant, geometric land drawings in the Khaybar province, west of Saudi Arabia, that are 5,000 years old. One common shape is a kite, as in this aerial photograph at right.



Consisting of volcanic stones stretching for hundreds of meters and seen clearly through satellite imaging, it is still a mystery which baffles scientists.

Discover a piece of this puzzle by calculating the area surrounded in yellow. What assumptions do you have to make in order to complete this calculation? (Measurements are rounded to the nearest integer.)

